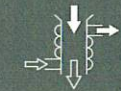


ALFRETON

4 BEDROOM HOME



Waste Water Heat Recovery Systems



Argon-filled double-glazing



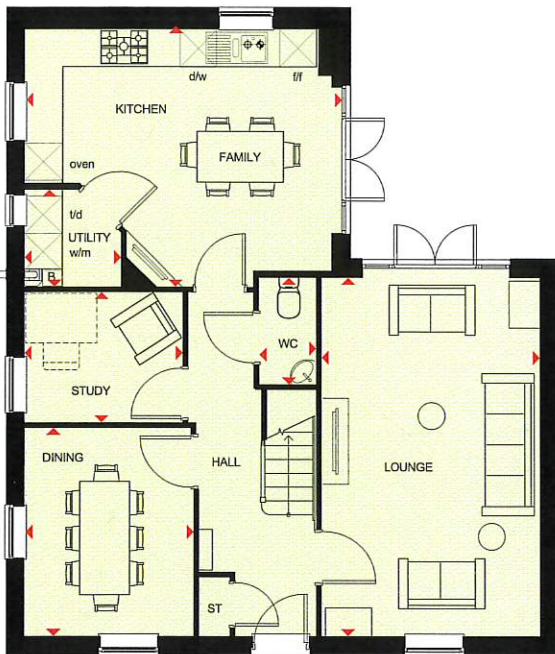
Decentralised mechanical extract ventilation (d-MEV)



Photovoltaic panels



Highly-efficient insulation



Ground Floor

Lounge	5719 x 3473 mm	18'7" x 11'3"
Kitchen/Family	5111 x 4115 mm	16'7" x 13'5"
Dining Room	3309 x 2688 mm	10'8" x 8'8"
Study	2565 x 2115 mm	8'4" x 6'9"
Utility	1520 x 1573 mm	4'9" x 5'1"
WC	900 x 1650 mm	2'9" x 5'4"

[Approximate dimensions]



First Floor

Bedroom 1	3585 x 3836 mm	11'7" x 12'5"
En suite	1411 x 2598 mm	4'6" x 8'5"
Bedroom 2	5647 x 2486 mm	18'5" x 8'1"
Bedroom 3	2572 x 3570 mm	8'4" x 11'7"
Bedroom 4	3145 x 3513 mm	10'3" x 11'5"
Bathroom	2572 x 2187 mm	8'4" x 7'1"

[Approximate dimensions]

KEY	B	Boiler	w/m	Washing machine space	td	Tumble dryer space	◄►	Dimension location
	ST	Store	f/f	Fridge/freezer space	w	Wardrobe space		
	BH ST	Bulkhead store	d/w	Dishwasher space	CYL	Cylinder		

